

Impact Report 2025-2026

# DARING TO TRANSFORM CARE



**Holland B**lo<sup>o</sup>rview  
Kids Rehabilitation Hospital

## Land acknowledgement

As we reflect on the past year, we affirm our commitment to truth and reconciliation. This commitment is grounded in trust, respect, continuous learning and unlearning, and honouring diverse ways of knowing, being and healing.

We are grateful to be in Tkaronto (Toronto), a Mohawk word meaning, “the place in the water where the trees are standing.” We live, work and provide care on the traditional territory of the Haudenosaunee-speaking nations, including the Huron-Wendat, Seneca and Mohawk. For more than 15,000 years, this land has been a place of gathering.

On our journey toward truth and reconciliation, we continue to examine our responsibility to support decolonization in pediatric rehabilitation across the health-care system and to value all ways of healing. Over the past year, Holland Bloorview has continued to take meaningful action, including creating accessible [smudging spaces](#) to support inclusive, culturally and spiritually sensitive care for Indigenous clients and families.

We recognize this work is ongoing. Guided by the wisdom of the communities we serve, we remain committed to listening, learning and taking action across this territory known as Turtle Island (North America).

Chi Miigwetch, Nia:weh, Merci—Thank you.

# **HOLLAND BLOORVIEW IS COMMITTED TO TRANSFORMING CARE AND BUILDING AN INCLUSIVE WORLD.**

This report highlights how, together, we are raising the bar in excellent, safe care; accelerating insights and innovation through our learning health system; preparing the next generation of experts in pediatric disability; and scaling programs beyond our walls so that children, youth and families across this province and beyond can receive the right care, at the right time, closer to home.



DADA

## Letter from our leaders

At Holland Bloorview, transformation is not an aspiration. It is a responsibility. As pressures rise across pediatric health care, we're daring to redesign care around what matters most: safer experiences, inclusive practices, better outcomes and more seamless support for children, youth and families.

Over the past year, we have strengthened the foundations of safe, high-quality care while embracing new ways of thinking informed by data, AI, technology, lived experience and partnership. From advancing personalized treatment approaches to building our learning health system, our work reflects a deep commitment to improving outcomes today while shaping a more responsive and inclusive health-care system for the future.

Equally important is how we invest in our team. We are supporting the next generation of clinicians, researchers and leaders by building environments where everyone feels they belong. We are also taking thoughtful steps to reduce our environmental footprint so that we can further extend impact well beyond our walls.

This progress is made possible through the dedication of our staff, volunteers and learners. We are deeply grateful for their continued partnership and for the trust of government, research partners and donors.

Looking ahead, we will focus on scaling what works – expanding access, removing barriers, strengthening outcomes and deepening partnerships across the system – so more children, youth and families can benefit from Holland Bloorview's specialized care, when and where they need it.

We are confident in our shared ability to lead change as we dare to transform care as Canada's hospital for children with disabilities and developmental differences.



**Bruce Squires**  
president and CEO,  
Holland Bloorview Kids  
Rehabilitation Hospital



**Catherine Roche**  
chair, board of directors,  
Holland Bloorview Kids  
Rehabilitation Hospital



# Raising the bar

At Holland Bloorview, children, youth and families receive personalized, world-leading care that puts safety first every day, in every clinical encounter. Our interprofessional teams combine deep clinical expertise with rigorous quality and safety practices to reduce risk, strengthen outcomes and create an exceptional care experience for children and youth with disabilities and developmental differences. Following a rigorous review by [Accreditation Canada](#) in October 2025, Holland Bloorview [achieved](#) Exemplary Standing, the highest level possible, scoring 100 per cent for the fourth consecutive cycle – an unprecedented achievement in safety. Holland Bloorview was also one of only 26 hospitals to [earn](#) all five badges in the Solutions for Patient Safety (SPS) network challenge.



## New standard, safer care

Client safety is paramount. Holland Bloorview [implemented](#) the highest standard for food and liquid textures to support safer care for clients with complex medical needs.



## Supporting increasingly complex needs

We're evolving our services to meet the increasingly complex medical and social needs of the children and youth we serve. The complex continuing care team is leveraging its expertise to [create](#) new care pathways that deliver high-quality, wrap-around care while also reducing pressure across our health-care system.



## Collaborative, responsive care

When care is tailored, outcomes improve. Only one of a few in the province, the psychopharmacology clinic brings interprofessional expertise together to [deliver](#) highly individualized, responsive treatment to families.



92

new clients served

## Empowering youth, fostering safety

As a former client, Mathias Castaldo knows the importance of creating a safe and inclusive environment. As a youth facilitator and safety coach, he uses his lived experience to advocate for accessibility and inclusion, while keeping safety at the centre of every interaction.

27 trained safety coaches



# Accelerating insights, advancing care

As a learning health system, Holland Bloorview is committed to powering technology and innovation for children and youth with disabilities and developmental differences. We are leveraging our clinical and research data as well as lived experience to support continuous learning and drive accessible, precise, innovative and equitable care. The goal? To expand access to innovative medical treatments, technology, devices and drugs designed to advance the health and well-being for the more than one million Canadian children and youth that live with disability.



## Every breath matters

Breathing is something many of us take for granted. But for kids with Duchenne muscular dystrophy, every inhale and exhale can be dangerously difficult. Our team is unlocking new research discoveries to [predict](#) when breathing support is needed, enabling earlier intervention and better outcomes.



## Helping kids move

The Motion Analysis Centre at Holland Bloorview has one simple mission: to [leverage](#) cutting-edge technology to help children and youth move. Why? So they can get back to what matters the most – playing, exploring and doing what they love.



## Learning from every child

Holland Bloorview is on a journey to become a [learning health system](#) – one that turns continuous learning into action, driving accessible, precise and equitable care. By building a robust data infrastructure, we're empowering teams to make real-time improvements that strengthen care and services for children and youth with disabilities and developmental differences.



## Analytics in action

Our decision support and data analytics team transforms hospital data into key insights, developing dashboards, reports and AI-enabled tools that help teams make informed decisions and drive continuous quality improvements.



# WHO WE ARE

## The team



**1,250**  
staff



**881**  
volunteers



**454**  
students

**224**  
nurses

**26**  
physicians

supporting  
**100**  
programs

**80**  
medicine

**62**  
research

**435**  
health professionals

**148**  
nursing

**164**  
other clinical and  
non-clinical  
placements

## Research



**40**  
scientists/  
investigators



**191**  
research  
trainees

**3**

Canada  
Research Chairs

**5**

hospital-university  
endowed chairs

**222**

peer-reviewed  
papers published

**11**

research labs/  
centres

**105**

invited international talks,  
keynotes or lectures

## Family and youth leadership



**79**  
family  
leaders

**60**  
youth  
leaders

**21**

Family Advisory  
Committee  
members

**25**

Youth  
Advisory  
Council  
members

BY THE NUMBERS



BRI ranked among  
the top three in  
researcher and  
hospital intensity

# WHO WE SERVE

9,740  
clients served



452

inpatient visits

64,700

outpatient visits



40 days

average length  
of inpatient stay

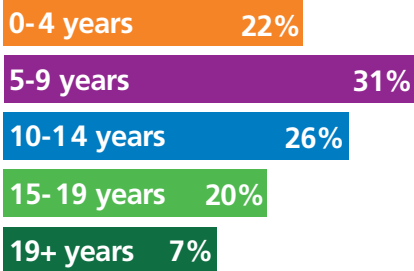
excluding long-stay clients,  
respite care and sleep studies

34%

of our clients have  
three or more  
diagnoses



## Ages of clients



3,295

clients accessing  
inclusion programs



Top languages spoken by  
families (excluding English)

Spanish, Mandarin  
Chinese, Arabic, Tamil,  
Dari, Bengali, Urdu

9.9%

of clients required  
interpreter services



# HIGHLIGHTS



## Together we dare

Holland Bloorview has launched the [largest fundraising campaign](#) in Canadian history for pediatric disability. The goal: to raise \$100 million to establish Holland Bloorview's Centre for Excellence in Childhood Disability. We're daring to shape the future of pediatric disability care across Canada.

## New era

[Bruce Squires](#) joined Holland Bloorview as president and CEO in February 2026. With his extensive experience in health-care leadership, he is setting bold goals to advance the hospital's mission to enable meaningful and healthy futures for children, youth and their families.



## Showcasing sustainability

Holland Bloorview is committed to reducing its carbon footprint by integrating sustainability across all aspects of the hospital. The 2025 [inaugural impact report](#) highlights its efforts towards a cleaner, greener hospital.



## More inclusive health care

Recognizing the importance of inclusive, culturally oriented health care, the hospital recently opened indoor and outdoor [smudging areas](#). Holland Bloorview provides culturally safe, accessible and welcoming spaces for Indigenous clients, families, staff and community members.





## Forefront of inpatient care

A leading clinician in brain injury for the past decade, [Dr. Alysha Ladha](#) is now at the helm of the hospital's inpatient unit – a role where she brings compassionate, client- and family-centred care and a passion for training future health-care leaders.

## Supporting transitions

Holland Bloorview is partnering across the health-care system to make the transition from pediatric to adult care safer and more coordinated – reducing missed care, worsening outcomes, emergency department use and isolation. On March 30, 2026, the hospital [co-lead](#) a first-of-its-kind medical transitions think tank to design pathways with earlier planning, navigation support, better information-sharing and multidisciplinary models of care for adults.



## Empowering youth

[Celebrating 30 years](#), Holland Bloorview's Youth Advisory Council empowers young people to co-design and evaluate programs alongside staff, students and families – while building their confidence, leadership and advocacy skills grounded in lived experience.

## Building an international community

Through the Bloorview Research Institute's [Global Guest Speaker Series](#), launched in September 2025, we are connecting international experts with researchers, clinicians, families and community partners to accelerate learning and collaboration in childhood disability research. Our aim? To spread evidence-informed ideas that strengthen rehabilitation, inclusion and real-world outcomes, worldwide.



# Learning today, leading tomorrow

The future of pediatric disability calls for a diverse, highly specialized workforce equipped with the knowledge, skills and resources to deliver personalized, inclusive care. Through interdisciplinary, client-and family-focused field placements supported by dedicated experts and mentors, we're preparing future health-care leaders to build capacity for high-quality care – improving access for children with disabilities right across the country.





## Paying it forward

[Dr. Darcy Fehlings](#) has mentored countless students, many who have gone on to become trailblazers in pediatric disability care at home and abroad. Her influence has helped change the face of pediatric disability care, especially for children with cerebral palsy.

## The future of pediatric disability research

As a child, [Gabriela Masri Ahmar](#) witnessed how hard it was for her newcomer family to navigate Ontario's health-care system. Now, as a summer research student, she's driven to guide research that includes inclusive, diverse perspectives and voices.

**22%↑**  
increase in  
SOAR-stream  
students



## Growing clinical capacity

Children and youth with disabilities are at higher risk of facing psychosocial and mental health challenges. Yet, Canada faces an acute shortage of trained psychologists. Holland Bloorview's pre-doctoral psychology [training program](#) equips trainees with the skills, knowledge and expertise they need to provide specialized, inclusive care for children and youth.

## Inclusive, connected training

As a world-leading centre for excellence in pediatric disability, Holland Bloorview plays a critical role in building the next generation of clinical leaders. Across 20 disciplines, students are supported by dedicated clinical education liaisons – creating an inclusive, connected approach that empowers learners to thrive and shape the future of pediatric disability care.

**95%** of students would recommend a Holland Bloorview placement to their peers



# Every child, everywhere

Every child deserves access to the best possible care, no matter where they live. At Holland Bloorview, we are increasing access to our innovative, evidence-based clinical programs so more children, youth and families across Canada and worldwide can access individualized care – where and when they need it.





## From a world-first to province-wide

Imagine playing music with the power of your mind. This may be the stuff of science fiction – but it’s happening here with Holland Bloorview’s world-first clinical brain computer interface (BCI) program. What’s more, the hospital and Empowered Kids Ontario have teamed up to [scale and spread](#) this technology across the province, thanks to support from The Slight Family Foundation.

**7**  
BCI sites  
across  
Ontario

## Building inclusive, accessible communities

For many kids with disabilities, feeling left out during play is all too common. That’s why Holland Bloorview and March of Dimes Canada have partnered to scale and increase [access](#) to Holland Bloorview programs that are focused on inclusion and play.



## Integrating research and care

As Holland Bloorview’s first associate chief of implementation science, [Dr. Sarah Munce](#) is building new engagement frameworks and implementation pathways to ensure we are translating meaningful and relevant evidence into practice, in real time. This groundbreaking work will support a learning health system where we can connect diverse forms of evidence with what matters most to children, youth and families.

**\$1M**  
in [research grant](#)  
funding awarded  
to Dr. Munce over  
the next five years

## Supporting brighter futures

The Employment Pathways team is creating accessible, inclusive employment opportunities for high school youth with disabilities. Through hands-on programs, youth build real-world skills, confidence and career pathways that support belonging and future success.

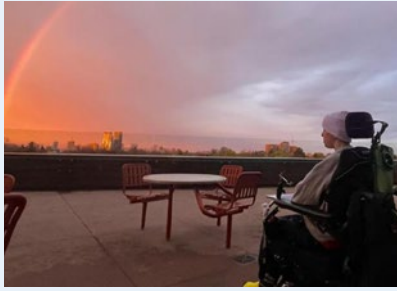
**83** youth enrolled in  
Employment Pathways



# NEWSMAKERS

## Long ride home

A bike ride left Henry Black, a Toronto teen, paralyzed. *CBC News* shares how he's inspiring others with his message of resilience and hope.



## Igniting futures

*Global National* caught up with Cyle, a teen who took part in The Independence Program in preparation for college to study broadcasting and communications.



## All about me

Desiree Da Costa, a client services facilitator at Holland Bloorview, tells *Global News Morning* why she hopes her children's book, *All About Me*, can be used as a teaching tool to demystify disability in the classroom.



## Combatting misinformation with evidence

In response to the U.S. administration's controversial autism announcement last fall, media outlets swiftly sought out the Bloorview Research Institute's autism experts for the facts – and to advocate for the dignity and integrity of all autistic individuals.

## Building capacity

Dr. Melanie Penner, senior clinician scientist, is on a mission to build capacity so that more families can get timely autism diagnostic assessments closer to home. *Global National* finds out how.



## Enabling agency

Tom Chau, distinguished senior scientist, sits down with *Forbes* to share why he has spent his entire career's work on one powerful idea: communication is not a 'nice to have.'

1,000+  
total media hits  
298 million  
total media  
impressions

Holland Bloorview  
in the news!

THE CANADIAN PRESS 



### Capes on Ice

CP24 Breakfast shone a spotlight on Holland Bloorview's 10th annual *Capes for Kids* campaign. More than 100 community members laced up at an action-packed skate-a-thon to launch the fundraiser.



### Crossing the finish line

Marathon runner Marvin Mendoza spoke to *OMNI News* about his goal to run 26 marathons in one year to raise funds for Holland Bloorview's *Together We Dare* campaign.

# AWARDS



[Dr. Jessica Brian](#)  
**Award of Excellence**  
Empowered Kids Ontario



[Dr. Darcy Fehlings](#)  
**Mentorship Award**  
American Academy of  
Cerebral Palsy and  
Developmental Medicine



[Dr. Tom Chau](#)  
**Officer of the  
Order of Canada**  
Governor General of Canada;  
**Canadian Disability  
Hall of Fame**  
The Canadian Foundation for  
Physically Disabled Persons



[Carolyn McDougall](#)  
**Disability Employment  
Service Award for  
Outstanding Employment  
Service Professional**  
Ontario Disability  
Employment Network



**Pharmacy team  
Interprofessional  
Initiative Award**  
*Pharmacy Practice +  
Business*



**Communications and  
public engagement team  
Advocacy Award**  
Empowered Kids Ontario  
**Gold Quill Award of Excellence  
& Best of the Best recognition**  
IABC



Best in TAHSN: 2025  
Climate & Health Award

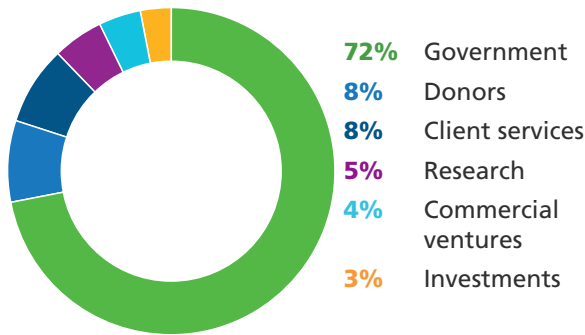


**The DAISY Award**  
FOR EXTRAORDINARY NURSES  
HONORING NURSES INTERNATIONALLY  
IN MEMORY OF J. PATRICK BARNES

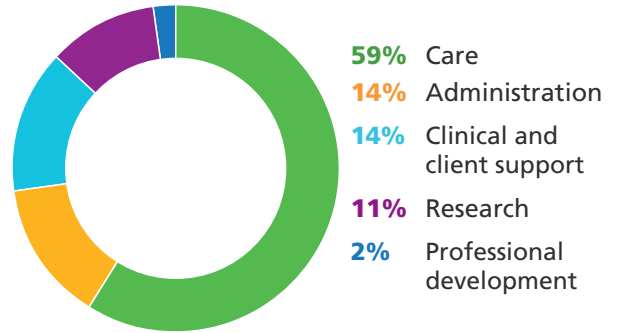
# FINANCIALS

## Holland Bloorview Hospital

Where do hospital funds come from?

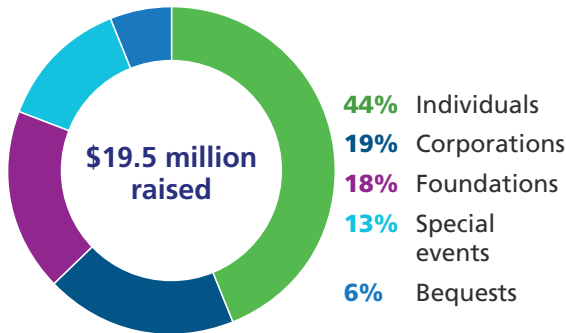


How do we spend hospital funds?

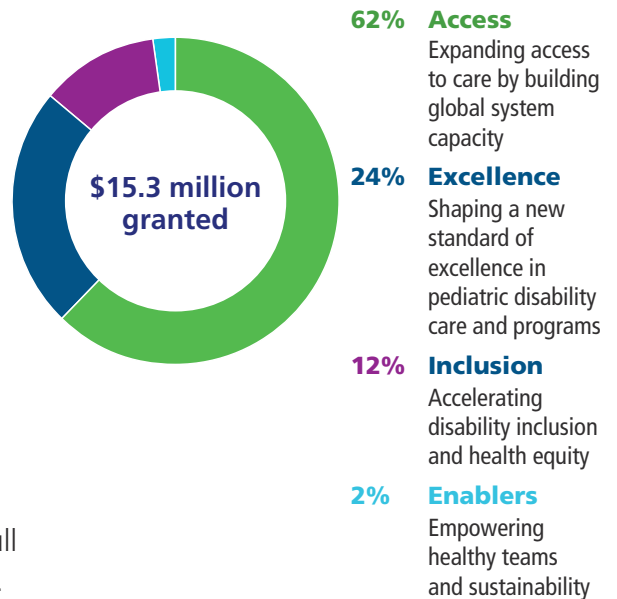


## Holland Bloorview Foundation

Where do foundation funds come from?



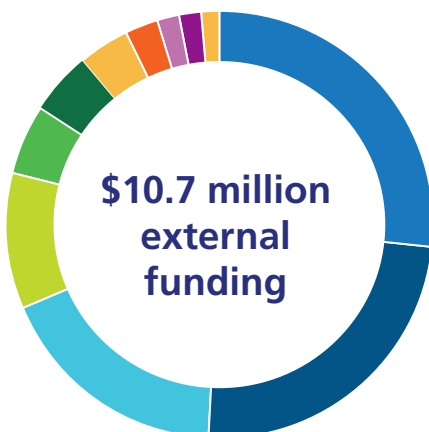
How do we grant foundation funds?



View Holland Bloorview and the Foundation's full 2025-2026 financial statements on our [website](#).

## Bloorview Research Institute

Where do research funds come from?



- 30% Tri council
- 23.1% Provincial
- 16.9% Donation
- 9.9% Federal
- 5.1% Indirect
- 4.5% National Association/Foundation
- 3.8% Scientist awards
- 2.3% Studentship
- 1.7% International
- 1.4% Industry
- 1.3% Subgrants collaboration
- 0% Other peer-reviewed
- 0% Royalties/other revenue



To read more about how you're making an impact, visit [ImpactReport.HollandBloorview.ca](https://www.hollandbloorview.ca/ImpactReport)



The web and PDF versions of the impact report are accessible for screen readers and other accessible technologies.

**Holland Bloorview**

Kids Rehabilitation Hospital

TOGETHER WE

**DARE**

A teaching hospital fully affiliated with University of Toronto

Holland Bloorview Kids Rehabilitation Hospital

150 Kilgour Road, Toronto, ON M4G 1R8

416-425-6220 [info@hollandbloorview.ca](mailto:info@hollandbloorview.ca)

[HollandBloorview.ca](http://HollandBloorview.ca)

